

Colm McEvoy
RESIDENTIAL

Consistency
Throughout
Change . . .

Tel: (045) 897711

www.colmmcevoy.ie

property today™

Colm McEvoy
COMMERCIAL

Consistency
Throughout
Change . . .

Tel: (045) 434138

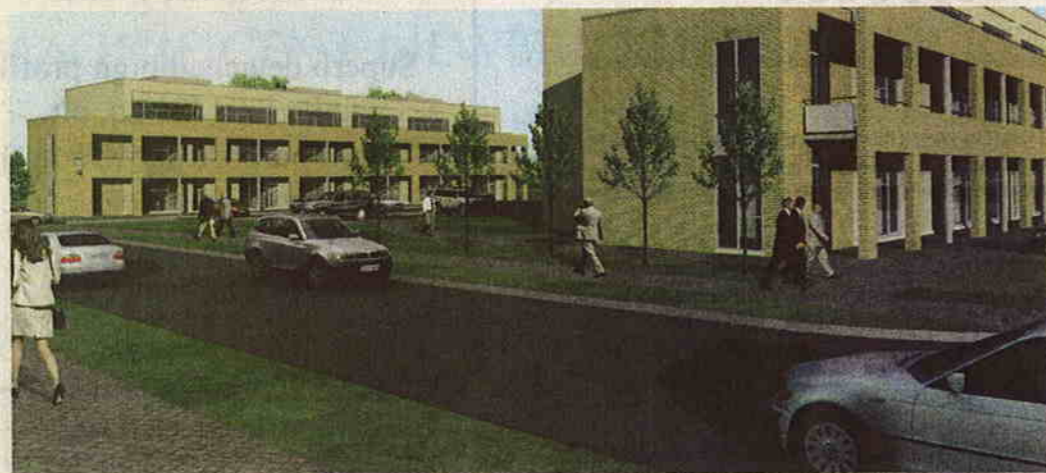
www.colmmcevoy.ie

INSTITUTE OF TRAINING AND DEVELOPMENT MOVES INTO MILLENNIUM PARK

Colm McEvoy Commercial has just agreed a letting of an own door office unit at Sycamore House, Millennium Park to the Irish Institute of Training and Development.

This premises extends to 99 sq.m. (1066 sq.ft.) and a new lease term of 4 years and 9 months has been agreed with the tenants with an annual rent of €21,320. Millennium Business Park is located within Osberstown at the intersection of the N7/M7 Junction. This is a major junction within the national road network and has recently been upgraded to a three lane carriageway between Naas and Newlands Cross. Millennium Business Park is located on the periphery of Naas town on the newly opened Western Link Road, approximately 30km from Dublin city centre and c. 22km from the M50 motorway. In addition, the local area is served by the Arrow train commuter service, which provides swift access to Dublin city centre. The development comprises of two identical buildings (Sycamore House and Elm House) with 12 self contained own door offices suites in each, with five car spaces per 1,066 sq ft and the developers have finished these units and surrounding landscape to a superior level.

For further information on these last remaining own door office space units, please contact Darac O' Neill or Jenny Daly of Colm McEvoy Commercial/ Newbridge Office 045-434138.



FOR SALE BY PRIVATE TREATY

SEE
STA